

Technical Bulletin – TBN-026

Product: LCV5 (HILUX)

Subject: BRAKE PAD WEAR CHECK

Summary:

Modification to brake outer housing to facilitate check for pad wear

Description:

Remove outer housing from brake assembly **DO NOT** remove seal cover from housing.

Clean –up cast surface using Dremel to achieve flat, scale free surface
in area as shown in Fig 1 (for rear left hand housing and front right hand housing) and Fig 2.
(For rear right hand housing and front left hand housing)

Drill and tap brake housing ¼” BSPT (TAP DRILL SIZE 11.20mm) refer to Fig 1, 2 and 3.
Remove sharp edges and any swarf.
Re-assemble Outer Housing and Brake Pads to Brake assembly (On Vehicle).

To determine MINIMUM DIMENSION B – that is the dimension at or below which the pads must be changed.

- On a new brake, take measurement through tapped hole using a vernier to within $\pm 0.25\text{mm}$ this will be dimension ‘A’ refer Fig 3.
- **Note: Rear brake must have fail safe brake applied and the front brakes to be applied via brake pedal.**
- Fit plug refer to Fig 3.

TO CALCULATE MINIMUM DIMENSION ‘B’ FOR PAD REPLACEMENT

REAR BRAKE ASSEMBLY

MINIMUM DIMENSION ‘B’ = DIMENSION ‘A’ – 2mm

FRONT BRAKE ASSEMBLY

MINIMUM DIMENSION ‘B’ = DIMENSION ‘A’ – 4mm

Minimum Dimension ‘B’ to be clearly stamped or engraved on housing as shown in Fig 1 and Fig 2

Brake pad wear check:

- Check dimension 'B' using vernier – refer to figure 3
- **Note: Rear brake must have fail safe brake applied and the front brakes to be applied via brake pedal.**
- If measurement taken is equal to or less than MINIMUM DIMENSION 'B' stamped on housing, pads must be replaced.

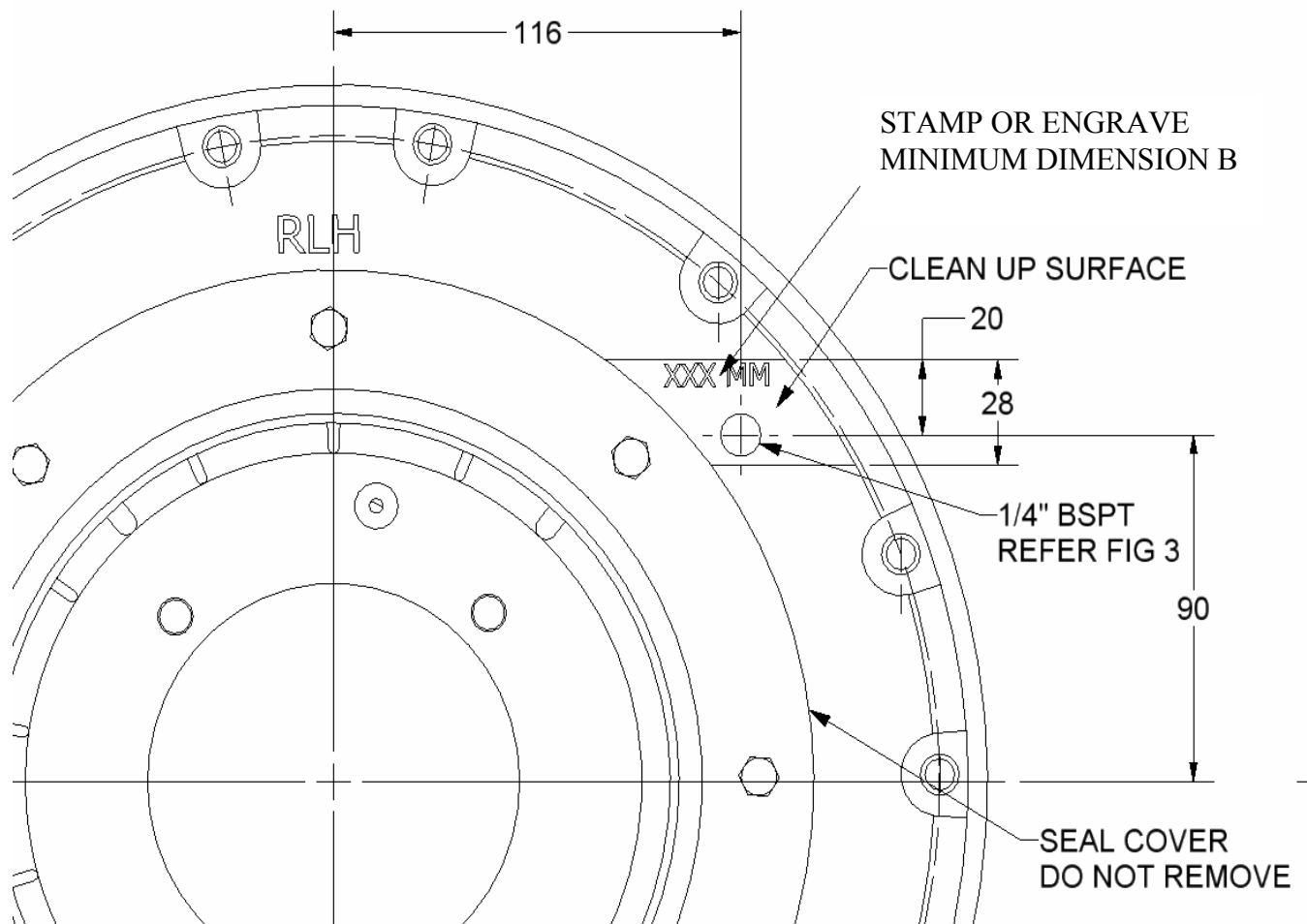


FIG 1
APPLICABLE TO REAR LH AND FRONT RH OUTER HOUSING

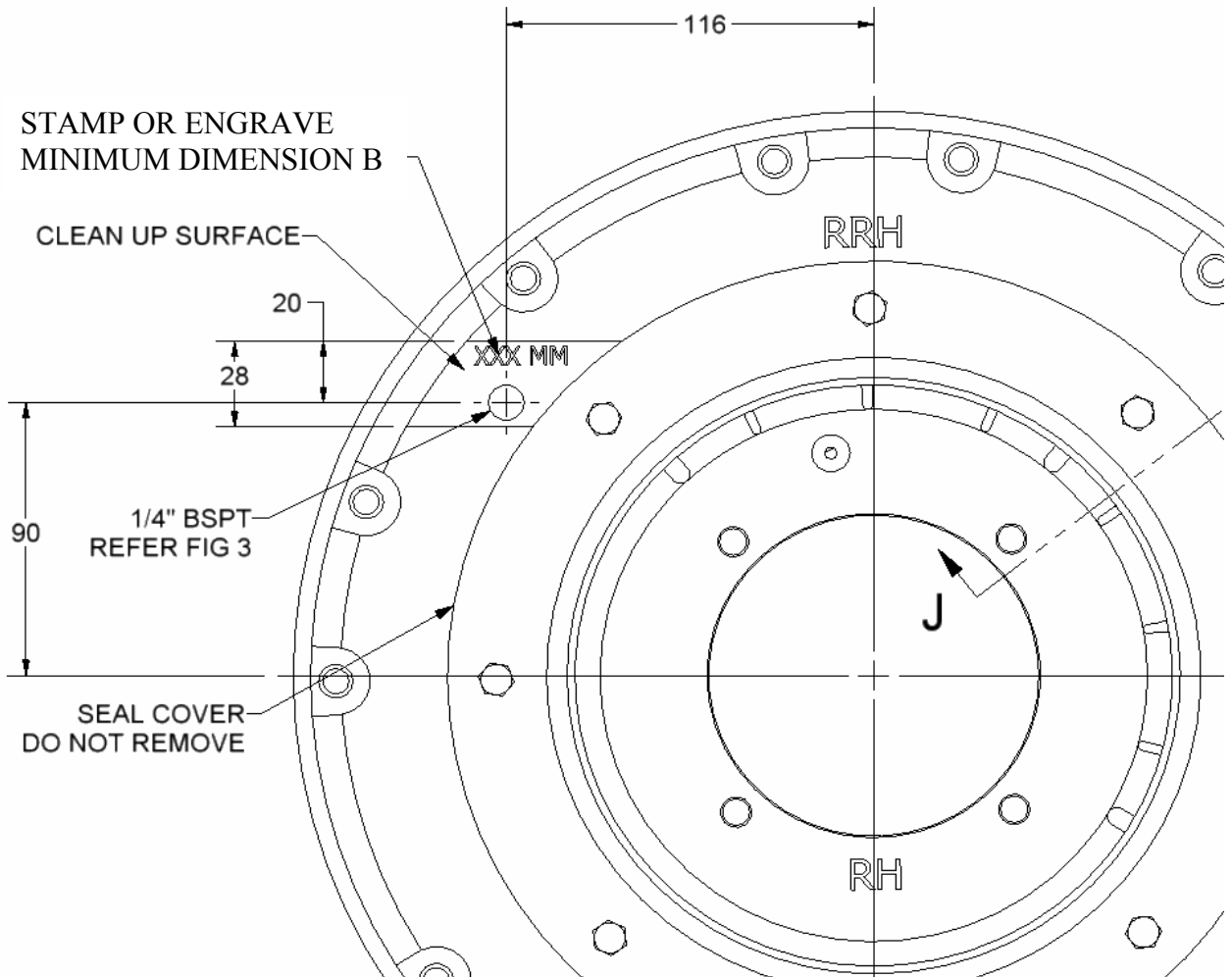


FIG 2
APPLICABLE TO REAR RH AND FRONT LH OUTER HOUSING

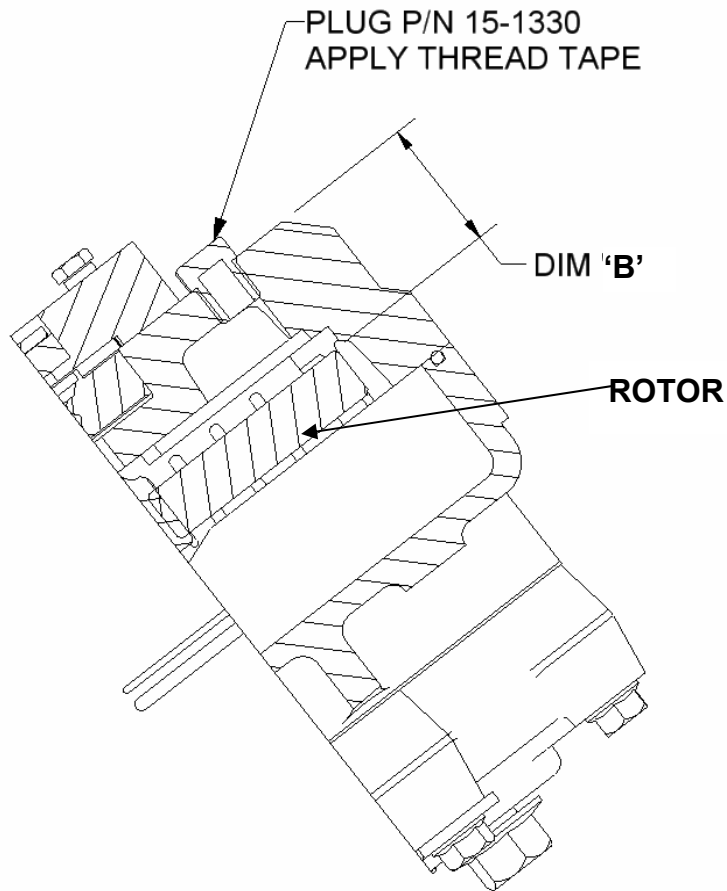


FIG 3
CHECK DIMENSION 'B' FOR PAD WEAR.

Change pads when:

Measured dimension B \leq Minimum Dimension B

Prepared by: R Mc Dougall
Approved by: A Miller
Issue Date: 11-DEC-2007
Issue Revision: 1

(Engineering Manager)

Advanced Braking Pty Ltd.
3 McDonald Street
Osborne Park WA 6017
AUSTRALIA
PO Box 1177
Osborne Park WA 6916

Tel: +61(08) 9273 4800
Fax: +61 (08) 9201 9986
Email: info.perth@advancedbraking.com
Web: www.advancedbraking.com